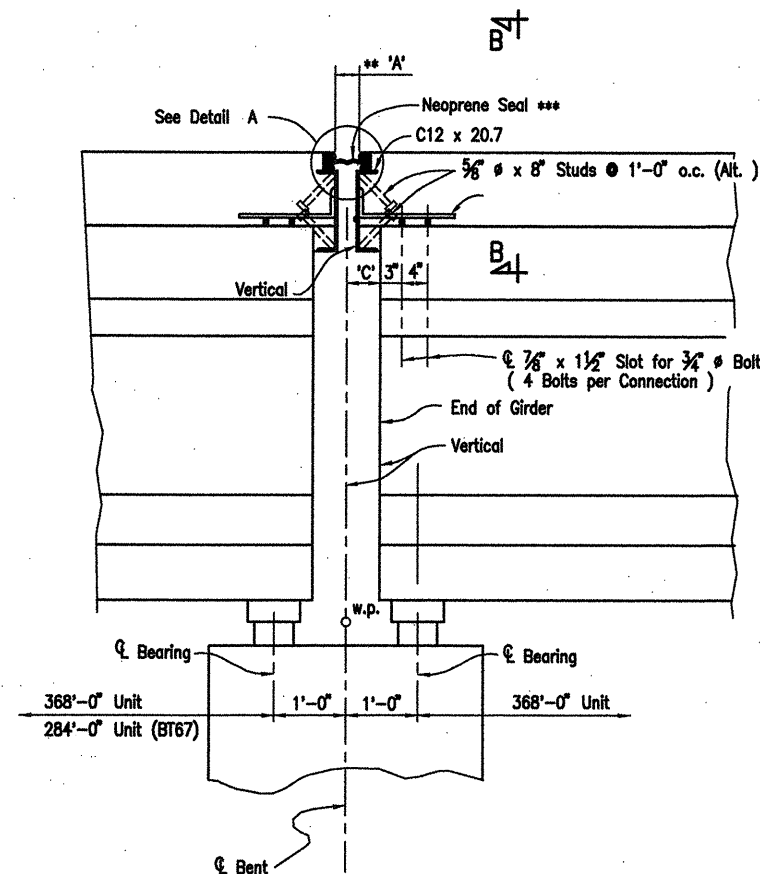
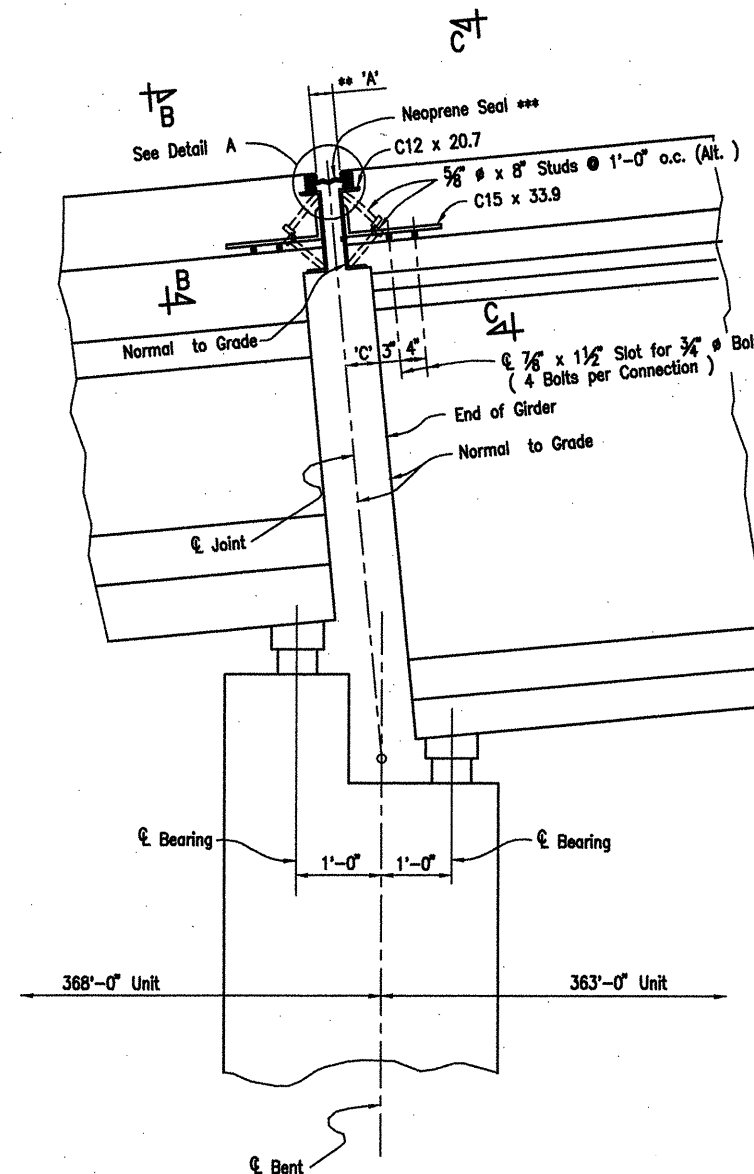


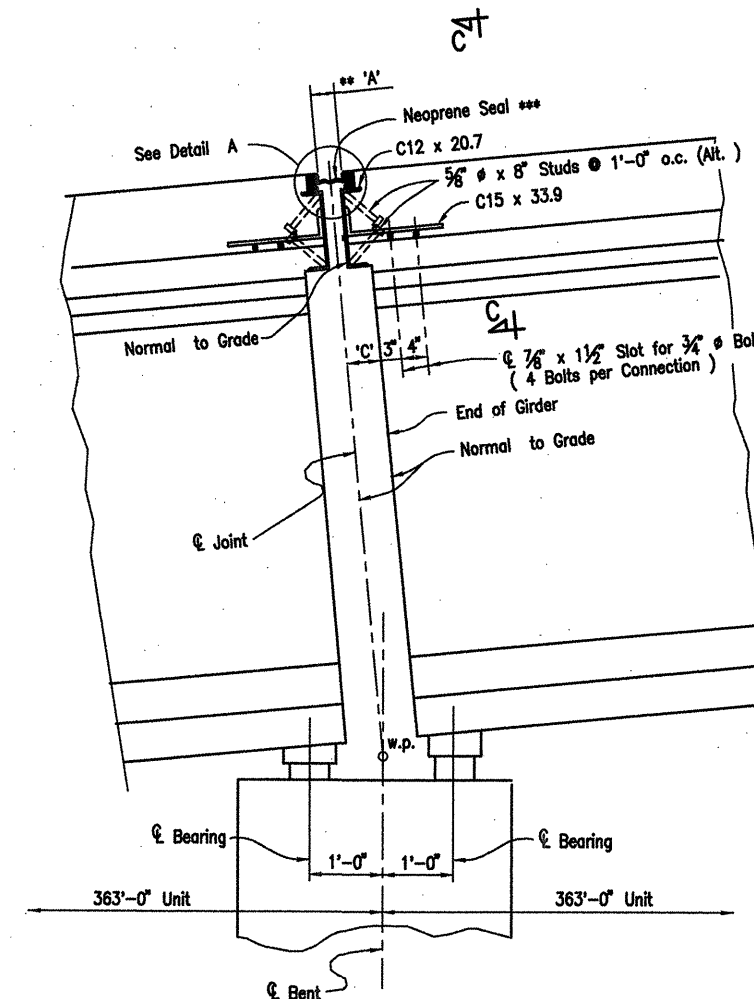
DATE REVISED	DATE FILMED	DATE REVISED	DATE FILMED	FED. ROAD NO.	STATE	FED. AID PROJ. NO.	SHEET NO.	TOTAL SHEETS
					ARK.			
						JOB NO. 110395	106	203
						06830	EXP. JOINT	47096



JOINT DETAILS AT BENTS 67 AND 71
N.T.S.



JOINT DETAILS AT BENT 75
N.T.S.



JOINT DETAILS AT BENT 78
N.T.S.

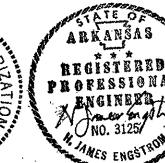
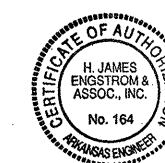
Note: For Sections B-B and C-C, See Dwg. No. 47097
For Details A, See Dwg. No. 47097
See Dwg. No. 47097 for Strip Seal Joint Data Table.

** 3" Strip Seal Joints shown on dwg's 47012 to 47020
represent the 3" Jt. @ 60°F.

*** Strip Seal Joint Components shall be capable of
moving between the Amin. @ 120°F and Amax. @ 0°F.

ALTERNATE NO. 1

DETAILS OF EXPANSION JOINTS
(SHEET 2 OF 5)



WHITE RIVER STR. & APPRS.
(CLARENDON) (PH III) (F)
MONROE COUNTY
ROUTE 79 SEC. 13
ARKANSAS STATE HIGHWAY COMMISSION
LITTLE ROCK, ARK.

Engstrom/Modjeski and Masters, Inc.

DRAWN BY: PMR DATE: Nov. 07 FILENAME: b1103951_e02
CHECKED BY: GPT DATE: Nov. 01 SCALE: 3/4"=1'-0"
DESIGNED BY: YO DATE: Nov. 01
BRIDGE NO. 06830 DRAWING NO. 47096

BRIDGE ENGINEER

ACAD SCALE: 3/4"=1'-0"

COMPANY\1999 JOBS\99-044 AHTD\WHITERIVER\JOB 110395\expjoint2 Alt1